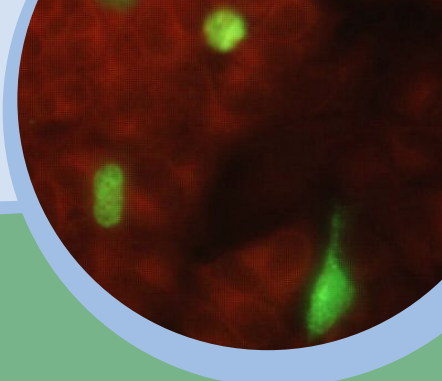


Respiratory Virus Work Flow

Tubes vs. Tubeless



Going Totally Tubeless™ Provides Benefits for All Laboratories

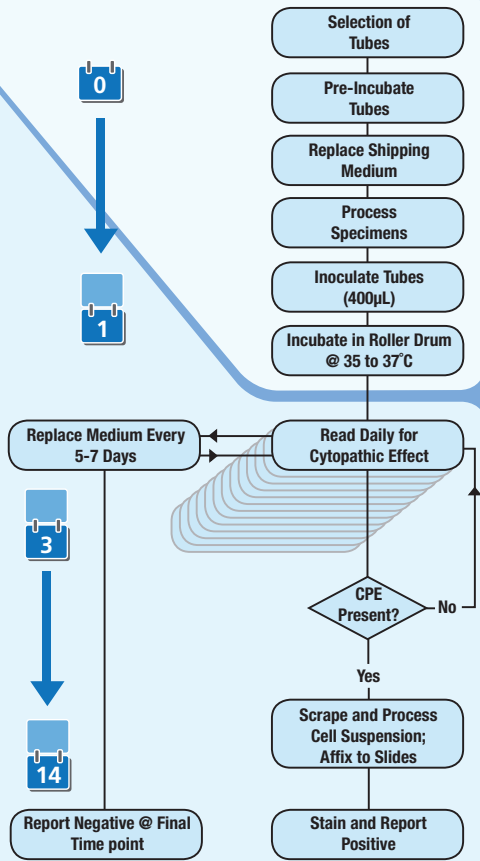
Tubes

Total time to completion: **3-14 Days**

- Complex inventory management; maintaining multiple cell lines
- Longer culture time to negative reporting; 14 days!
- Highly trained staff required for interpretation of cultures

DAYS

Tubes Work Flow



Total time to Completion: 7-14 Days

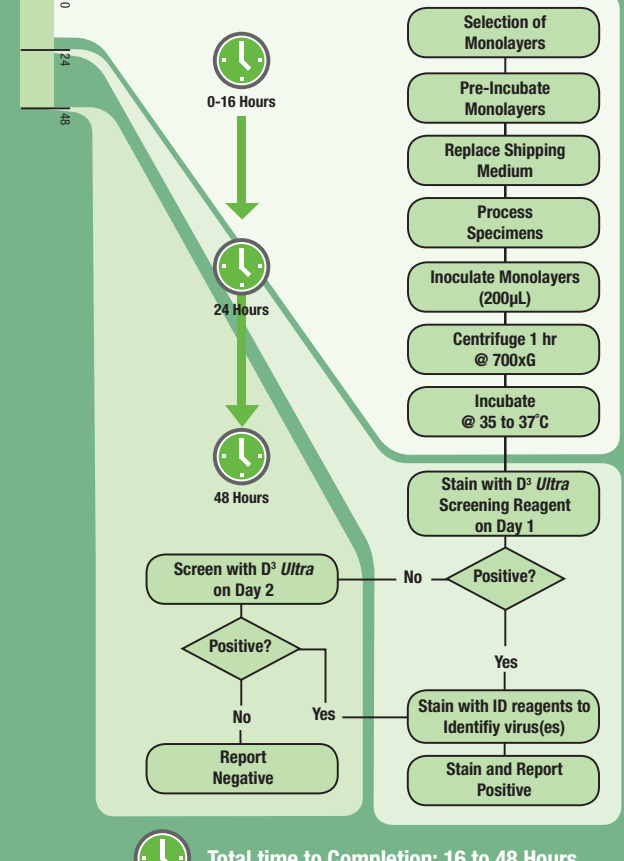
Totally Tubeless

Total time to completion: **16-48 Hours**

- Simplified inventory management; for respiratory, R-Mix™ or R-Mix Too™
- Much shorter time to negative report; 48 hours
- Simple interpretation with fluorescent antibodies

HOURS

Totally Tubeless Work Flow



Total time to Completion: 16 to 48 Hours